



Product Service

CERTIFICATE

No. B 15 04 13332 207

Holder of Certificate: IDEC CORPORATION

2-6-64 Nishimiyahara, Yodogawa-Ku
Osaka
532-0004 JAPAN

Production
Facility(ies): 33644

Certification Mark:



Product: Pushbutton switches
Electrical Emergency Stop Device

Model(s): HA1E series
(See Attachment for nomenclature)

Parameters:

Rated voltage:	AC-15(250Vac) DC-13(125Vdc)
Rated input current:	AC-15(1.5A) DC-13(0.22A)
Remark:	When installing/inserting the equipment all requirements of the mentioned test standard must be fulfilled.

Tested according to: EN 60947-5-5:1997/A11:2013

The product was tested on a voluntary basis and complies with the essential requirements. The certification mark shown above can be affixed on the product. It is not permitted to alter the certification mark in any way. In addition the certification holder must not transfer the certificate to third parties. See also notes overleaf.

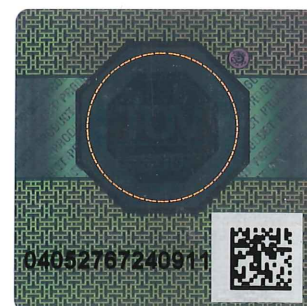
Test report no.: 73536630-02

Valid until: 2020-04-08

Date, 2015-04-13


(Shigehisa Ishikawa)

Page 1 of 2



Certificate Attachment
Certificate No.



Product Service

B 15 04 13332 207

Nomenclature:

<u>HA</u>	<u>1</u>	<u>E</u>	-	<u>V</u>	<u>2</u>	<u>S</u>	<u>1</u>	<u>V</u>	<u>R</u>	-	<u>*****</u>
1	2	3		4	5	6	7	8	9		10

1. Series, HA
2. Bezel Shape
1 – Round
3. Non-illuminated / Illuminated type
E – Short body type for Emergency Stop Switch
4. Function
V – Pushlock turn reset
5. Operator Shape
2 – Extended
6. Applicable Switch Unit
S – HA-S Series
7. Contact type
1 – 1 Normally closed contact
2 – 2 Normally closed contacts
8. Terminal Configuration
None – For Solder/tab
V – For PWB
9. Button color
R – Red
10. Manufacture's Control Number
***** - Additional letters and/or numbers